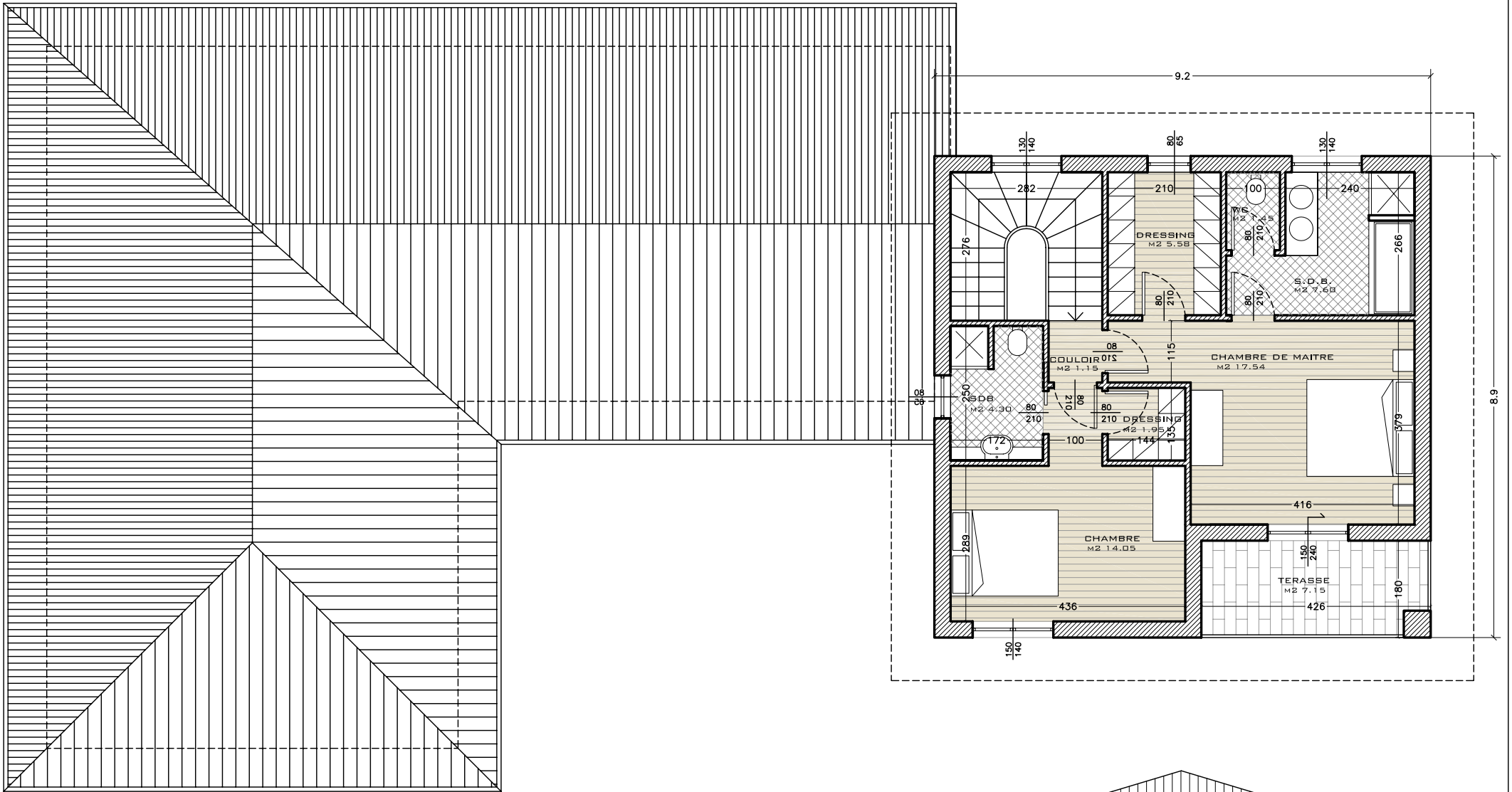


MAISON TYPE A2 ELEVATION LATÉRALE

SURFACE HABITABLE = 227.00 M²

GARAGE = 34.45 M²

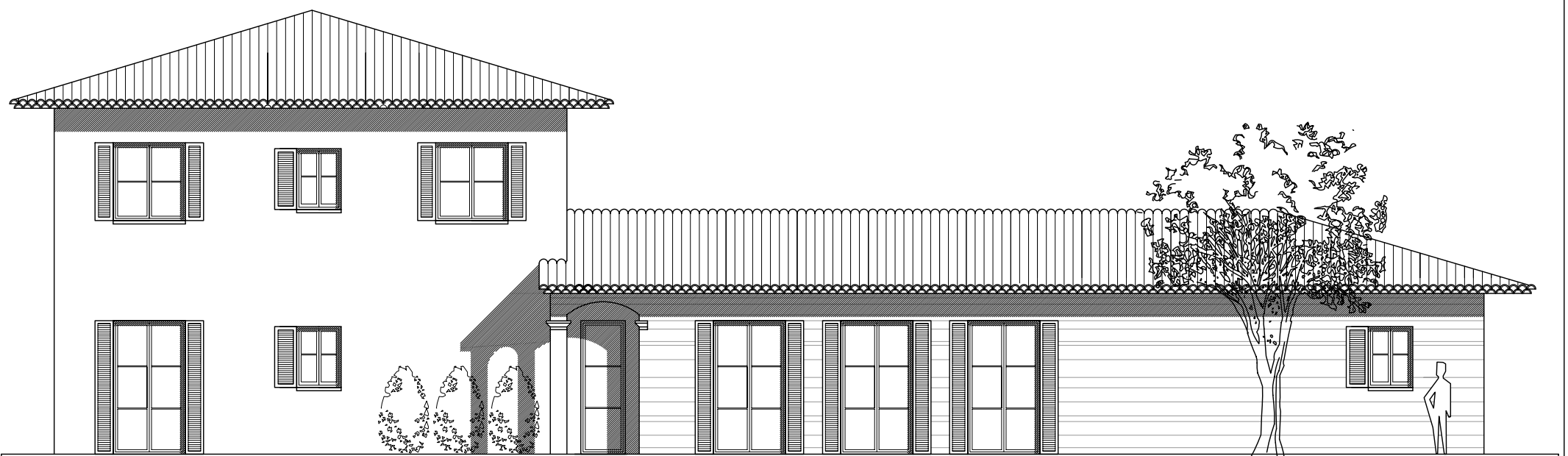
TERRASSE = 7.15 M²



PREMIER ETAGE 1 : 100



ELEVATION FRONT TERRASSE 1 : 100



ELEVATION FRONT ENTREE 1 : 100